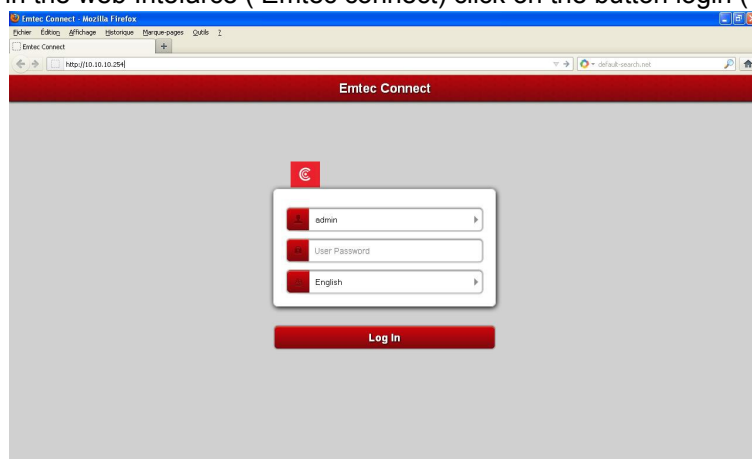
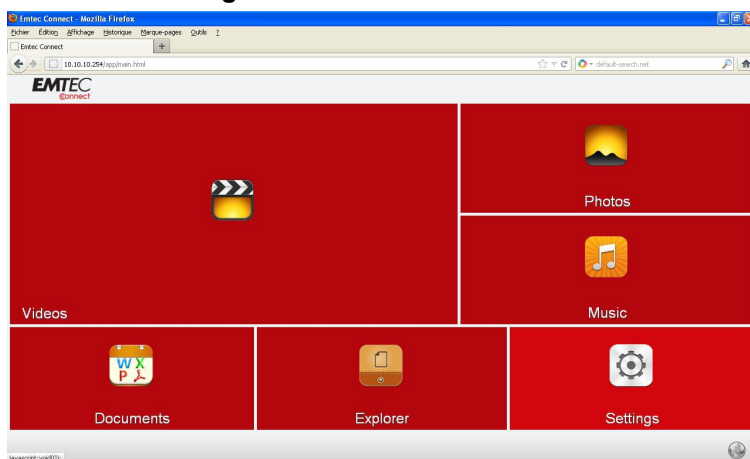


Update procedures PowerConnect or P600/P700

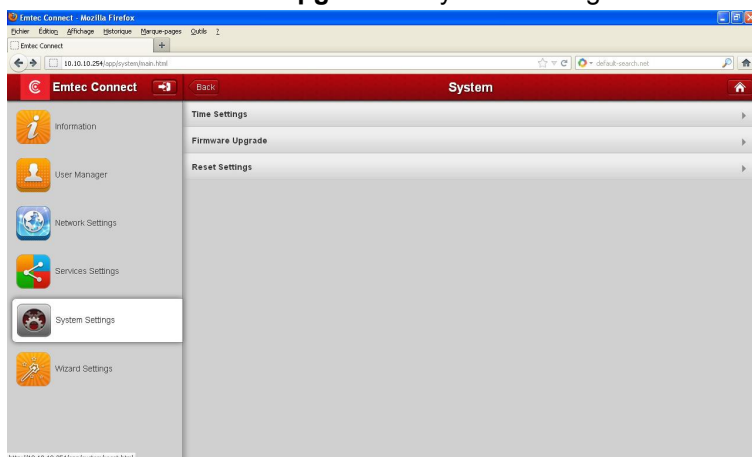
- 1) Turn on The P600/P700 or PowerConnect (press power button 5 secondes) and wait that the blue LED is fix.
- 2) On the PC, download the New firmware on our website.
- 3) On the PC, open in the Wifi connexion menu and select the wifi network **WifiHDD-xxxx**.
- 4) In the address bar of the web browser type the following IP address : **10.10.10.254**
- 5) in the web Interface (Emtec connect) click on the button login (leave the password empty)



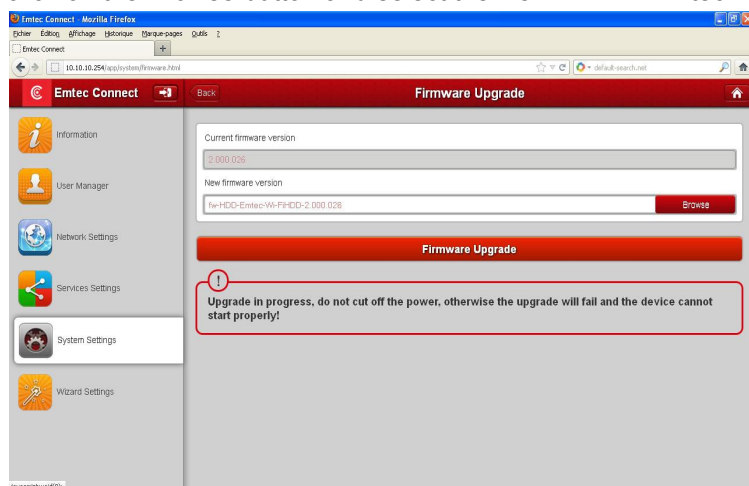
- 6) click on the **Settings** icon



- 7) click on the **Firmware Upgrade** in System Settings menu.



8) click on the Browse button and select the file “fw-HDD-Emtec-Wi-FiHDD-2.000.052” (previously downloaded)



9) click on the **Firmware Upgrade** button and please wait 5 minutes.

